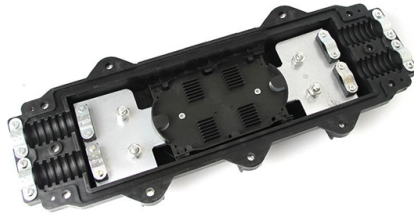


Huijue Switch Showpoe



Overview

Features include wide AC input voltage (90Vac ~ 300Vac), 96% conversion efficiency, intelligent battery management, RS485/TCP/IP monitoring, and multi-stage protection. Ideal for mobile base stations and indoor communication nodes. To cope with the problem of no or difficult grid access for base stations, and in line with the policy trend of energy saving and emission reduction, Huijue Group has launched an. Founded in 2002, Huijue Group is a high-tech service provider integrating intelligent energy storage equipment and computer intelligent network communication system integration and application. Huijue Network's products are exported to Europe, North America, Southeast Asia and other countries and. Run the display device command to obtain the product name of a switch and determine whether the switch supports the PoE function according to the product name. If the product name does not contain PWR or PWH, the switch. 0000000°000000 0000°00000000 & 0000000000 00000000-000000000000 can rotate 90° vertically and 300° horizontally for wider security coverage with no blind spots. The smart auto-tracking feature can automatically lock and track moving humans ensuring you don't miss any suspicious. Shanghai Huijue Network Communication Equipment Co. The company is dedicated to becoming a leader in the. Shanghai, China 5 years 523 staff Main categories: Home energy storage system, Telecom power supply, Energy Storage Batte.



Article Content

Jan 21, 2026

untitled [ftp.ext.hp]

If the new PD is connected to a port “X” having a higher PoE priority than another port “Y”, the switch removes PoE power from port “Y” and delivers it to port “X”. In this case the PD on port “X” receives

Sep 19, 2025

show poe controller | Junos OS | Juniper Networks

Output Fields Table 1 lists the output fields for the show poe controller command. Output fields are listed in the approximate order in which they appear.

May 01, 2026

Power over Ethernet (PoE) User Guide for EX Series Switches

Power over Ethernet (PoE) enables electric power, along with data, to be passed over a copper Ethernet LAN cable. Powered devices—such as VoIP telephones, wireless access points,

Jul 01, 2025

Huawei Switch PoE Configuration

When we choose the PoE setting, we need to use it according to the above standards and maximum functions. The configuration of the POE switch

Jun 20, 2026

Hiseeu Smart AI 8 Port POE Network Switch - Enersave Solutions

Sale ... Hiseeu Smart AI 8 Port POE Network Switch Discount: \$10,000 JMD (57%)
\$7,799 JMD \$17,799 JMD Features 8 Ports Standard

Aug 25, 2025

show power-over-ethernet

show power-over-ethernet Syntax show power-over-ethernet brief Description
Displays the port power status. PoE Port Lists all PoE-capable ports on the

Sep 02, 2025

Embedded Communication Switching Power Supply

The HJDUM03 series embedded communication switching power supply system targets the needs for communication application, energy saving, and emission reduction. The series has a wide AC input

Apr 13, 2026

Shanghai Huijue Technologies Group Co., Ltd.

Shanghai, China 5 years 523 staff Main categories: Home energy storage system, Telecom power supply, Energy Storage Batte...

Nov 13, 2025

Enabling PoE on EX Series Switches (CLI Procedure)

For EX Series switches that support PoE ports, the factory default configuration enables PoE on the PoE-capable ports, with default settings in effect. You might not have to do any additional

Nov 03, 2025

What is a PoE switch (Power over Ethernet switch)?

A PoE switch provides power and network connectivity over Ethernet cables to access points, security cameras, and other Internet of Things devices

Jun 28, 2025

10/100M 9-port smart PoE switch

Smart PoE switch with 9*10/100M RJ45 ports. Port 1-8 can support IEEE 802.3 af/at PoE standard. Adjust function switch, port 1-8 support VLAN isolation, PoE

May 03, 2026

Telecom equipment, Hybrid Power Storage | Huijue Group

We develop and implement customized hybrid energy solutions for mobile telecom sites using a combination of PV solar power, wind energy, and diesel generators

Apr 15, 2026

Power over Ethernet (PoE) switch troubleshooting

Description This article explains how to troubleshoot Power over Ethernet (PoE) related issues. Symptoms PoE errors on the device seen on CLI. PoE devices connected to the device are

Oct 05, 2025

Hiseeu 1000 MBPS 16 Port PoE Switch + 2 Gigabit

□High Power 250 W & Smart PD Detection□The total power supply of PoE switch is 250 W (Each PoE port can be up to 30 W), and the smart PD detection

Dec 19, 2025

Gigabit 10-port PoE switch-PoE Switch

OVERVIEW The ONV-H3108PS is a Gigabit PoE switch independently developed by ONV. It has 10*10/100/1000Base-T RJ45 ports. Port 1- 8 can support PoE+ power

Jan 14, 2026

Verifying PoE Configuration and Status (CLI Procedure) | Junos OS ...

Purpose Verify the PoE controller configuration and status, such as the PoE power budget, total PoE power consumption, power management mode, and the supported PoE standard.

Aug 07, 2025

Gigabit uplink 11-port PoE switch

PoE switch with 8*10/100M RJ45 ports and 2*10/100/1000M RJ45 ports and 1*1000M uplink SFP fiber port. 1-8 ports support the PoE+ standard, default support PoE

Oct 02, 2025

Leading ESS Manufacturer& Solution Provider

Founded in 2002, Huijue Group is a leading Energy Storage Equipment Manufacturers, a high-tech service provider integrating intelligent network communication equipment, new energy and applications.

Jan 02, 2026

What''s the Difference between PoE, PoE+, and PoE++ on Huawei

Huawei switches, equipped with PoE, PoE+, and PoE++ capabilities (PoE Switch), provide flexible options for powering various network devices like IP cameras, access points, and VoIP phones.

Sep 14, 2025

ArubaOS 7.2 Command Line Interface Guide + AI | Manualzz

Get instant answers from the ArubaOS 7.2 CLI Reference Guide using AI. Download the PDF or chat with our AI assistant for quick configuration insights.

Nov 22, 2025

Configuring PoE Interfaces on EX Series Switches | Junos OS

Note: For PoE to be enabled on all PoE-capable interfaces, the configuration must include the interface all statement in the [edit poe] hierarchy level. With the exception of EX8200 switches that were

Nov 24, 2025

1*Hiseeu PoE PTZ Camera System+1* Hiseeu PoE Switch w/8

This PTZ camera c and 300° horizontally for wider security coverage with no blind spots. The smart auto-tracking feature can automatically lock and track moving humans

Jul 13, 2025

Viewing the PoE status on specific ports

Viewing the PoE status on specific ports Syntax show power-over-ethernet <port-list> Displays the following PoE status and statistics (since the last reboot) for each port in <port-list> :

Jul 25, 2025

Viewing PoE status on all ports

Viewing PoE status on all ports Syntax show power-over-ethernet brief Displays the port power status:

Mar 02, 2026

POE Switch

Brand HUOYI Model GPOE204 US \$38.20 All Gigabit POE switch 8GE+2G+2S-port Brand HUOYI Model GPOE408 US \$69.40

Sep 24, 2025

Determining Whether a Switch Supports the PoE Function

If the product name contains PWR or PWH, the switch supports the PoE function. If the product name does not contain PWR or PWH, the switch does not support the PoE function.

Mar 20, 2026

show poe controller, Verifying PoE Configuration and Status CLI ...

Page 3118 highlights Dell PowerConnect J-Series Ethernet Switch Complete Software Guide for Junos OS show poe controller Syntax show poe controller Release Information Command introduced

Apr 20, 2026

show poe

show poe show poe [<slot/module/port>] Description Displays the PoE status of all or a specific port on the controller. Example The output of this command shows the PoE status of the specified slot,

Nov 10, 2025

How Do I Check the PoE Power Supply Capability and the

Using the Hardware Center of Info-Finder to Query the PoE Capability of Devices Info-Finder Hardware Center is an online information query tool that provides technical specifications of

Contact Us

For more information, pricing, or custom solutions, please contact us:

Website: <https://piano-lessons.co.za>

Email: info@piano-lessons.co.za

Phone: +31 6 37258914

Address: Herengracht 123, 1015 BT Amsterdam, Netherlands

This document is for informational purposes only. Specifications subject to change without notice.

