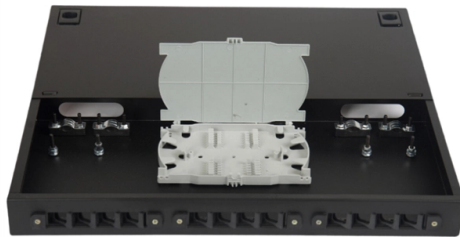


Several optical ports of the aggregation switch



Overview

Equipped with future-proof fiber-optic and multi-Gigabit Ethernet (mGbE) ports as well as high-throughput uplink and stacking ports, they form the basis for efficient and fail-safe networks. Stacking allows network expansions, redundancy scenarios, and single IP management to be. Uplink direction: The PEN passive aggregation module multiplexes the eight channels of optical signals sent by remote optical modules and input through RX ports into one channel, and outputs the signals through the uplink port. PEN passive aggregation modules fall into two types: passive. Equipped with eight SFP+ ports, two additional SFP28 ports and one RJ45 console port for configuration. With AXIS D8308 Fiber Aggregation Switch you can connect multiple Axis devices using fiber midspans over long distances. The following figure shows an FS-2048F aggregation-layer switch.



Article Content

Feb 01, 2026

Cisco Switch Port Aggregation

How to configure an etherchannel link between 2 cisco 2960 switches. The etherchannel allows to combine several physical switch ports into one logical port.

Nov 09, 2025

Aggregation Switches: LANCOM Systems GmbH

LANCOM aggregation switches enable high-performance and hierarchical switch infrastructures to be set up and serve as the distribution basis for networking

Jan 27, 2026

Aggregation Switches: LANCOM Systems GmbH

Equipped with future-proof fiber-optic and multi-Gigabit Ethernet (mGbE) ports as well as high-throughput uplink and stacking ports, they form the basis for efficient

Jan 06, 2026

Port Aggregation: Boosting Throughput and Redundancy in Enterprise ...

Port aggregation is a networking technique that combines multiple physical ports on a switch into a single logical link. By splitting traffic across these aggregated ports, it increases

Jun 17, 2026

In-depth analysis: What is an aggregation switch?

In many network constructions, we have all heard of switches. So do you really understand switches? Why are aggregation switches often overlooked?

May 14, 2026

RY-LGSO25-28 | Switches | barox

Being developed for tasks with high data volume, this layer-2/3 switch with L3 functions is suitable for example for video over IP and video streaming in connection with multicast as well. The high number

Sep 16, 2025

What is Link Aggregation (LAG) in Networking?

Link aggregation, sometimes referred to as LAG, which stands for Link Aggregation Groups, refers to the feature of network devices that allow the combining of

Dec 14, 2025

What is a 10G SFP+ Switch and How to Use It?

What's a 10G SFP+ Switch? A 10G SFP+ switch is a network switch equipped with SFP+ ports that support 10Gbps speeds. Devices (such as

Jun 19, 2026

All you need to know about fiber aggregation points

These are: Aggregation switches/routers: The centralized aggregation points where multiple fiber optic links are consolidated into the core

Dec 22, 2025

Everything You Need to Know About Aggregation Switch

An aggregation switch with 10 Gigabit Ethernet and SFP ports provides several benefits, such as faster data transfer, flexibility, and scalability.

Mar 16, 2026

PEN Passive Aggregation Module

When PEN remote optical modules are connected to ports on a passive aggregation module, they do not need to be paired based on wavelengths. That is, PEN remote optical modules (numbered from 1

Sep 20, 2025

What Is an Aggregation Switch and How to Choose?

To efficiently bridge the access and core layers, the PicOS® S5860-20SQ aggregation switch is an ideal choice —it supports 10G SFP+ ports for

Aug 28, 2025

Aggregation layer | FortiSwitch 7.6.0 | Fortinet Document Library

The most appropriate FortiSwitch unit to form the aggregation layer comprises many 10/25/40 gigabit Ethernet ports to address the access layer and a few 100-GbE ports towards the core layer.

Nov 30, 2025

AXIS D8308 Fiber Aggregation Switch

Developed for long distance fiber installations. Equipped with eight SFP+ ports, two additional SFP28 ports and one RJ45 console port for configuration. With AXIS

Mar 07, 2026

All you need to know about fiber aggregation points

Fiber aggregation points are centralized locations within fiber optic networks where lower-speed fiber links are combined into higher-capacity cables

Jan 17, 2026

What is Switch Aggregation, Its Role and Selection Advice

What is switch aggregation? Switch aggregation refers to the concept of consolidating multiple access layer switches into a single aggregation layer switch in a traditional three-tier network

Dec 29, 2025

SFP SFP+ SFP28 QSFP+ QSFP28: Fiber Module Form Factor Guide

Smaller modules like SFP and SFP28 allow a higher number of ports on a switch, increasing total bandwidth within a limited rack space. Bandwidth Scalability Higher-capacity form factors such as

Sep 03, 2025

Aggregation Switch

An aggregation switch refers to a type of switch used to connect multiple ToR switches to a core switch/router in a cloud data center network. It enables high-bandwidth aggregation ports to be

Sep 05, 2025

SPECTRA AGGREGATION SWITCH

Up to 8 ONS-SX-SFPs are required to use all of the Optical Ports. This provides more bandwidth and allows more flexibility in network design. Please order either 1 or more ONS-SX-SFPs for each

Apr 03, 2026

WORLD WIDE WEB JOURNAL Home

will open to start the export process. The process may take but once it finishes a file will be downloadable from your browser. You may continue to browse the DL while the export process is in

May 01, 2026

Interfaces User Guide for Switches

Link Aggregation Group (LAG) You configure a LAG by specifying the link number as a physical device and then associating a set of interfaces (ports) with the link. All the interfaces must have the same

Jun 16, 2026

What is an Aggregation Switch?

Question 2: What is the uplink port of the 10GbE Layer 3 all-optical aggregation network switch? The uplink port is 40G, which can connect core

May 14, 2026

Test Access Points Aggregation

From each network element, you can use switched port analyzer (SPAN) ports or optical TAPs to send traffic flows directly to this TAP aggregation switch. The TAP aggregation switch is directly connected

Contact Us

For more information, pricing, or custom solutions, please contact us:

Website: <https://piano-lessons.co.za>

Email: info@piano-lessons.co.za

Phone: +31 6 37258914

Address: Herengracht 123, 1015 BT Amsterdam, Netherlands

This document is for informational purposes only. Specifications subject to change without notice.

